

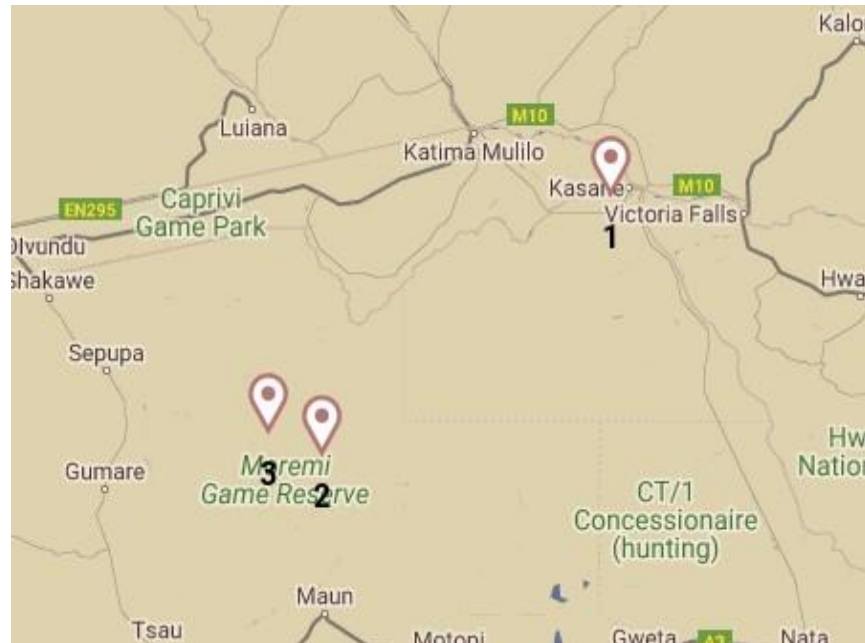
Prepared for You

# 10 DAY BEST OF BOTSWANA - LUXURY



# Overview

*Visualize your journey*



## Summary

- 1) Day 1 - 4: Chobe Game Lodge, Chobe
- 2) Day 4 - 7: Camp Xakanaxa, Moremi Game Reserve
- 3) Day 7 - 10: Xugana Island Lodge, Okavango Delta

# Overview

## *Itinerary at a glance*

### **Day 1 - 4**

#### Daily Program

Road transfer from Kasane Airport - Chobe Game Lodge

Chobe Game Lodge

3 nights

### **Day 4 - 7**

#### Daily Program

Road transfer from Chobe Game Lodge - Kasane Airport

Scheduled light aircraft charter from Kasane Airport - Camp Xakanaxa

Camp Xakanaxa

3 nights

### **Day 7 - 10**

#### Daily Program

Scheduled light aircraft charter from Camp Xakanaxa - Xugana Island Lodge

Xugana Island Lodge

3 nights

### **Day 10**

#### Daily Program

Scheduled light aircraft charter from Xugana Island Lodge - Maun Airport



## FINAL COSTS

---

**TOTAL COST : FROM USD 5380.00 PER PERSON SHARING\***

*\*Please note the prices are based on low season rates*

### INCLUDES

- Accommodation
- All meals
- Local beverages
- Park fees
- Scheduled activities
- Scheduled light aircraft charters from Kasane - Camp Xakanaxa - Xugana Island Lodge - Maun
- Road transfers

### EXCLUDES

- Premium beverages
- International flights
- Gratuities
- Items of a personal nature
- Travel insurance



## Day 1 - 4 | Welcome to Chobe

*Today is a travel day*

### **Airport Transfer**

On arrival at Kasane Airport and after clearing customs and collecting your luggage, you will be met by your driver in the arrivals hall for your road transfer to Chobe Game Lodge

### **Chobe**

Chobe National Park is located in northern Botswana, in easy driving distance to Kasane and Victoria Falls. Chobe is Botswana's first designated national park and, at over 11,700 km<sup>2</sup> (4,500 mi<sup>2</sup>), is one of the largest. The greater Chobe area consists of the Chobe River, Savute, and Linyanti, which combined is home to Africa's largest elephant population.

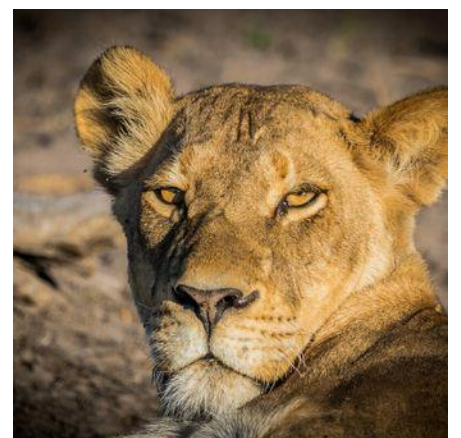
There is a rich variety of landscapes in addition to the famed riverfront including vast floodplains, woodlands, grasslands, and clay pans which can be enjoyed by boating safaris and game drives.

### **Overnight**

Accommodation: **Chobe Game Lodge**

Room type: **Room**

Inclusions: **Fully inclusive**





## Day 1 - 4 | Chobe Game Lodge

### *Property Overview*

The only permanent game lodge situated within the famous Chobe National Park, Chobe Game Lodge is Botswana's premier venue for guests looking for a perfect base from which to explore the National Park and the Chobe River. This five-star Lodge has full eco-grading by the Botswana Tourism Board.

Chobe Game Lodge is designed as a haven of peace and privacy – where relaxation is effortless and you can enjoy your own space. With six comfortably furnished viewing decks, a riverside boma, two bars, six different lounges and four dining locations, a comfy chair or lounge is never far away, each with a different perspective on the wilderness that surrounds the lodge. A large swimming pool provides welcome relief during hot afternoons and there is always a waiter on hand to bring you refreshments from the bar.

### *Experience & Activities*

Chobe Game Lodge offers a choice of land or water-based activities and the most complete game experience in the Chobe National Park. Early-morning and late-afternoon game drives are conducted by expert guides in open-sided 4x4 vehicles to ensure maximum visibility of Chobe National Park's spectacular scenery and abundant wildlife. Meanwhile, riverside



game viewing may be done from small and highly manoeuvrable boats, perfect for morning or sunset cruises.

Chobe's diverse wildlife roams in abundance – it is, for instance, home to the largest concentration of elephant in Africa. During the dry season these large herds, as well as vast herds of buffalo, congregate on the fertile flood plains along the Chobe River to drink, bathe and play. There are frequent sightings of lion, African wild dog, puku, red lechwe, sable, giraffe and roan antelope.

Guests wishing to pamper themselves are welcome to book one of the delightful treatments from the in-house beautician (for which there is an extra charge) or hit the gym for some exercise between the usual lodge activities (complimentary).

## ***Accommodations***

### **Room**

Chobe Game Lodge can accommodate up to ninety-four people in total luxury. Each of the forty-four rooms at the lodge is river-facing and air-conditioned, featuring overhead fans, complimentary mini bar, en-suite bathrooms and a private terrace. For those guests who demand the ultimate in exclusivity, the Lodge has four river-view suites, each with its own plunge pool and separate lounge area.

### ***Fast Facts***

#### **Rooms**

44 Rooms in total, accommodating a total of 94 guests: 23 Standard Rooms | 12 Interleading Rooms | 4 Triple Rooms | One Family Room | 3 Family Suites | One Honeymoon Suite

#### **Safari Activities**

Chobe river safaris

Game drives

Eco tours

Cultural excursions

#### **Quick facts**

All rooms are river facing

En-suite bathrooms with showers and bath, hand basin and toilet facilities

All rooms are air-conditioned and have ceiling fans

Accepts children of all ages

Various indoor and outdoor dining locations

Swimming pool

Tshwene Lounge and Cigar Bar with a Library, Billiard table and TV and Linyanti Cocktail Bar

Daily, inclusive laundry service available

A small hairdryer is available in each room

Electricity available 24/7 (220V)

Wi-Fi available throughout





## Day 4 - 7 | Chobe to Moremi

*Today is a travel day*

### **Airport Transfer**

This morning following breakfast and a final morning activity (time permitting), you will be transferred back to Kasane Airport.

### **Scheduled light aircraft charter**

On arrival at Kasane Airport, you will meet your pilot and connect to your scheduled light aircraft charter to Xakanaxa Camp

### **Moremi Game Reserve**

Moremi Game Reserve, named after Chief Moremi of the BaTswana tribe, was established in 1963 but has a history of exploration and adventure going back more than a hundred years. The area has always been a favorite hunting ground and photographic destination for adventurous travelers. It covers about 5,000 km<sup>2</sup>, encompassing about a quarter of the Okavango Delta, one of the world's largest inland deltas.

The northeast portion borders the Chobe National Park and the Khwai river. The prominent mainland of Chiefs Island and its drier habitats, along with multiple lagoons, create an incredibly diverse ecosystem of riverine woodlands, acacia thickets, grasslands, dry pans, palm fringed islands, and hippo-filled waterways, that provide great game-viewing possibilities. The



reintroduction of rhinos into the Moremi means that the area offers the possibility of seeing the Big Five, enhancing the all-round exceptional game viewing.

### **Overnight**

Accommodation: **Xakanaxa Camp**

Room type: **Safari Tent**

Inclusions: **Fully inclusive**



## Day 4 - 7 | Camp Xakanaxa

### *Property Overview*

The prime location of Camp Xakanaxa (pronounced Ka-ka-na-ka) on the banks of the Khwai River on the Xakanaxa Lagoon, in the heart of the Moremi Game Reserve, makes it one of the very few safari camps that offers guests an authentic, year-round Okavango Delta land and water safari experience.

In camp, a relaxed and friendly atmosphere together with personalised and caring service evokes a feeling of coming home. The stylish main buildings extend over the Khwai River and are set on raised platforms to maximise the views over the surrounding lagoons and islands. The elegant lounge and dining rooms, built of local timber, reed and thatch, feature a small library, expansive sundeck, plunge pool and sala with day bed. The fire-deck extends over the Khwai River and creates an enchanting environment in which to relax after dinner. There is also a larger pool with elevated sun deck in the expansive grounds.

### *Experience & Activities*

The ancient riverine forests, open savannah, serpentine channels and seasonal floodplains that surround the camp make for a varied habitat of exceptional fauna and flora. The camp is one of few offering a year-round land and water game-viewing experience, in open 4x4 safari vehicles or powerboats. The diverse habitat ensures prolific sightings of elephant,



buffalo, hyena, giraffe, hippo, wildebeest, kudu, lechwe, lion and leopard, among many others. Birding is spectacular, especially in the spring and summer months when the migrants are breeding.

Safari activities are conducted by licensed guides eager to share their in-depth knowledge and impart the treasured secrets of this great wilderness.

## ***Accommodations***

### **Safari Tent**

The camp accommodates twenty-four guests in eleven spacious all-canvas, classic Meru-style luxury safari tents, each with en suite showers, hand basins and toilet facilities. Situated around the fringe of the lagoon, every tent has a private viewing deck with comfortable loungers. Camp Xakanaxa is one of the few camps in Botswana which still offers the essence of a classic tented camp.

## ***Fast Facts***

### **Safari Activities**

Morning and afternoon guided game drives

Motorised boat safaris

Bird watching

### **Quick facts**

Eleven twin bedded luxury tents plus one family tent accommodating a maximum of 24 guests

En-suite showers, hand basin and toilet facilities

Accepts children from six years and older

Various indoor and outdoor dining locations

Large swimming pool with an elevated sun deck in the expansive grounds as well as a small plunge pool on the deck overlooking the Khwai River

Fully stocked self service bar

Daily, inclusive laundry service available

A small hairdryer is available in each room

Operates on AC 220V generator power during the day and evening. The generator is switched off at night and inverted 12-volt DC lighting provides room and bathroom illumination overnight. 220V AC plug's available in guest rooms.

Guest laptop available with basic internet connection in the library – there is no Wi-Fi available



## Day 7 - 10 | Moremi to Okavango Delta

### *Today is a travel day*

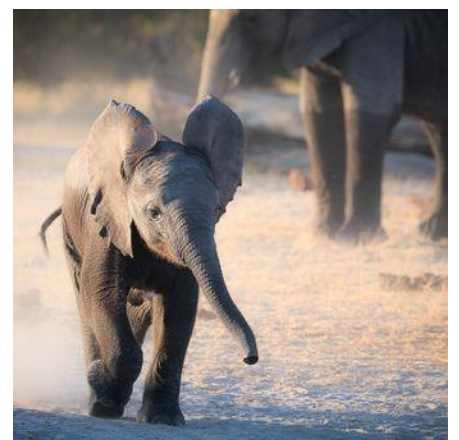
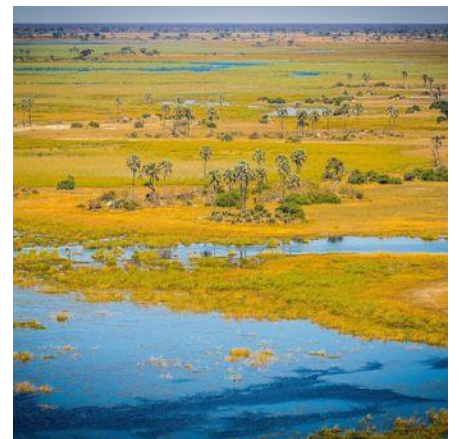
#### **Scheduled light aircraft charter**

This morning following breakfast and a final morning activity (time permitting), you will connect to your scheduled light aircraft charter from Xakanaxa Camp to Xugana Island Lodge.

#### ***Okavango Delta***

The Okavango Delta is the largest intact inland delta in the world, and is exceptionally rich in wildlife. Situated deep within the Kalahari Basin, the Delta is characterized by meandering deep water channels lined with papyrus reeds that open up into larger lagoons and islands; these in turn give way to seasonal floodplains and eventually large tracts of dry land where animals congregate. Fed by the Okavango River and rains from the highlands of Angola, the Delta can vary in size from 15,000 sq km (5,800 sq mi) during drier periods to a staggering 22,000 sq kms (8,500 sq mi) during wetter periods.

The game viewing depends on season, floodwaters and food availability but it is one of the most sought after wilderness destinations in the world. In addition to big game viewing, visitors come to experience the supreme tranquility and serenity of an untouched delta, and scenes of extraordinary natural beauty. It consistently produces very good predator action with



considerable herds of ungulates and elephants, as well as a reintroduced (predominantly white) rhino population.

**Overnight**

Accommodation: **Xugana Island Lodge**

Room type: **Chalet**

Inclusions: **Fully inclusive**



## Day 7 - 10 | Xugana Island Lodge

### *Property Overview*

Xugana Island Lodge is situated on a private concession and takes full advantage of this magnificent site. An expansive deck and al fresco dining area overlooks the vast, pristine body of water that makes up the permanent Okavango Delta.

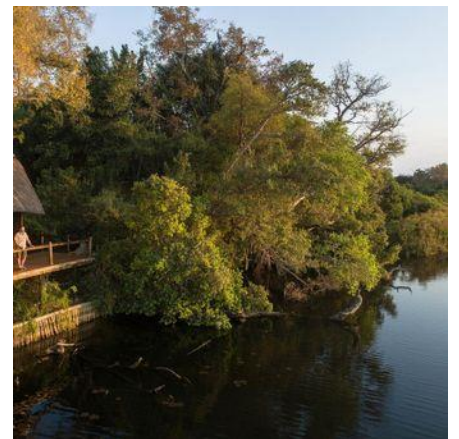
The lounge, bar and dining areas are set back under the Ebony and African Mangosteen tree canopy in open-sided thatched structures, and the swimming pool, located within the mature gardens in the centre of the island, is a perfect place to relax.

### *Experience & Activities*

Xugana Island Lodge is in a private concession offering a range of activities giving you the chance to experience a true Okavango Delta safari. All activities are conducted by experienced professional guides. Explore the crystal-clear waterways by mokoro (traditional dugout canoe) or motorboat for the chance to enjoy the magnificent variety of bird, plant and reptile species found in the area.

Your experienced guide can also take you on a guided nature walk on surrounding islands in the concession, giving you the chance to experience nature up close and personal.

Catch and release fishing for bream and tiger fish is also offered as an added activity at the lodge (season dependent).



## ***Accommodations***

### **Chalets**

The lodge accommodates only sixteen guests in large, raised, reed and thatch lagoon-facing chalets, with en-suite facilities and private viewing decks optimally placed on the shaded fringe of the island.

### ***Fast Facts***

#### **Rooms**

Eight twin bedded reed chalets accommodating a maximum of 16 guests

#### **Safari Activities**

Motorised boat safaris

Mokoro (canoe) excursions

Fishing

Bird watching

Helicopter flights (surcharges apply)

#### **Quick facts**

En-suite bathrooms with showers, hand basins, and toilet facilities

All rooms have fans (no air conditioning)

Accepts children from six years and older

Various indoor and outdoor dining locations including a floating deck (weather permitting)

Swimming pool

Camp fire with views over the lagoon

Daily, inclusive laundry service available

A small hairdryer is available in each room

Operates on AC 220V generator power during the day and evening. The generator is switched off at night and inverted 12-volt DC lighting provides room and bathroom illumination overnight. 220V AC plug's are available in guest rooms.

Guest laptop available with basic internet connection in the library – *there is no Wi-Fi available*





## Day 10 | Today we bid you farewell

---

*Today is a travel day*

### **Scheduled light aircraft charter**

This morning following breakfast and a final morning activity (time permitting), you will connect to your scheduled light aircraft charter back to Maun for your onward arrangements.

**Thank you for travelling with us, we hope to see you again soon!**



## Green Africa Safaris

---

### *Terms & Conditions*

These terms are valid for any bookings made with Green Africa Safaris. We look forward to your arrival in South Africa and providing you with the Green Africa Magic you have come to enjoy.

Here at Green Africa we highly recommend that you have taken out adequate travel insurance to cover the financial implications of Green Africa Cancellation Terms & Conditions.

### **More Info**

For further information on all our current Terms & Conditions, please click [here](#)

Travel protection plans will help assist you against any unforeseen situations. Travel insurance can include coverage for Trip Cancellation, Trip Interruption, Emergency Medical, and Emergency Evacuation/Repatriation, Trip Delay, Baggage Delay, and more.

For more information on Covid related cancellations, please contact us directly.



## Beat Malaria

Africa is full of bugs that come in all shapes and sizes, most are benign creatures looking to live out their lifecycles in peace and harmony. Some have stings that can really hurt (and may need medical attention) and others bite, leaving nasty, itchy bites. But when it comes to mosquitoes, they can leave more than just a red, swollen itch machine...

Malaria is a real threat, especially during the rainy season when the anopheles mosquito that carries malaria is breeding. It's the females that bite and spread the disease, which can, in some cases, make you really ill. So please take malaria seriously and take action to prevent infection. Here are some tips to help you...

### Prevention better than cure

The best way to prevent malaria is to take prophylaxis and use an anti-malarial drug.

We can recommend Malanil or Malarone as well as Mozitec. Consult your doctor for more information and check for any contra-indications with medicine you already take as well as possible side effects you need to be aware of.

### Cover up, buttercup and spray, spray, spray

When the sun starts to sink, put on long pants and long sleeves to minimise possible bites and spray the hell out of your legs and arms (even covered) with a good bug spray or smear with a bug stick. Don't forget your ears! And cheeks! And ankles.

Mozzies love ankles.

---

### **Doom your room**

Use bug spray to knock down insects in your room or tent at night, before you go to dinner. Give it a good all-over spray, shut the doors/flaps and walk away. Here in Sarf Efrica we have a spray called Doom. Others are called Target, Peaceful Sleep and Morein.

For the majority of accommodations, your room is prepared for you by the wonderful house keepers so no need to worry about the above.

### **Use your mozzie net**

That gorgeous, diaphanous netting around your bed is not a romantic come-on, it's designed to keep winged, bitey things at bay. So use it. Along with all of the above.

### **Talk to us**

We'll give you the full lowdown on where you're going and what the risks are in terms of malaria so that you can make an informed choice about how to prevent it.



## It's all in the detail

We kindly request that our guests adhere to the smaller charter flight rules and regulations regarding baggage limitations when flying throughout Southern or East Africa. This does not apply to your International, Regional or Domestic flights with commercial airlines.

Due to the nature of charter and shuttle flight services, aircraft are smaller than typical airliners and therefore have much smaller luggage holds.

### Need to Know

Luggage is restricted to 20 kg per person on charter flights.

Bags should be soft-sided, flexible bags.

**Bags with a solid frame do not constitute 'soft bags'.**

Bags **MUST** be completely flexible to facilitate being stowed in the 'belly pod' luggage compartment of the light inter-camp transfer aircraft.

By not adhering to these luggage requirements, travellers stand to cause delays and incur additional costs to themselves.

*This 20 kg includes both hand luggage and travel luggage.*

